



CEGELEC INFRA TECHNICS

CO2 REPORT

IIS





AMBITION



ENVIRONMENTAL AMBITIONS

REDUCING CARBON FOOTPRINT

Scope 1 & 2 targets

2018 **-40%** 2030

Objective Scope 3

2019 **-20%** 2030

OPTIMISING RESOURCES

Target

- Optimise production processes
- Improve waste sorting
- Extend the lifespan of equipment and reuse it

PRESERVING NATURAL ENVIRONMENTS

Target

- Prevent damage and accidents
- Aim to achieve no net loss of biodiversity
- Optimise water usage



OUR SOLUTIONS

We have a collective responsibility to find concrete solutions to climate change. As a result, we are committed to reducing our environmental footprint whilst supporting our customers in the energy transition:

- Real impact through concrete, measurable actions
- Tailored, practical solutions
- A roadmap and action plans



INFRASTRUCTURE

- Achieving the energy transition in energy and transport infrastructure

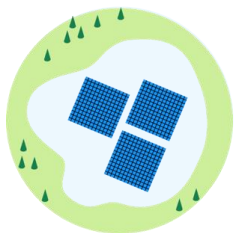


INDUSTRY

- Contribute to the continuous improvement of industrial performance

ACCELERATOR OF THE ENVIRONMENTAL TRANSITION

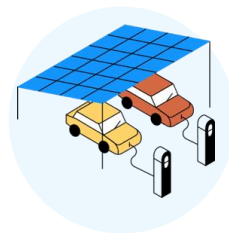
INFRASTRUCTURE



Supporting the development
of energy production methods



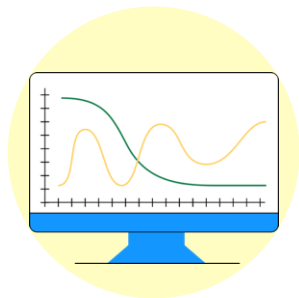
Participating in sustainable
projects across the regions



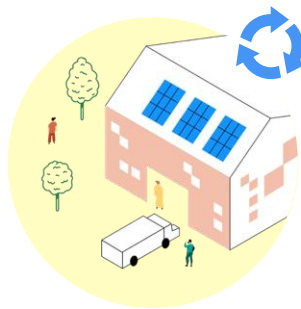
Offering low-carbon mobility
solutions



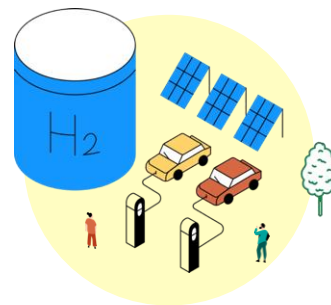
INDUSTRY



Improving the energy
efficiency of processes and
equipment



Developing
the circular economy



Supporting our customers
in decarbonising
their operations

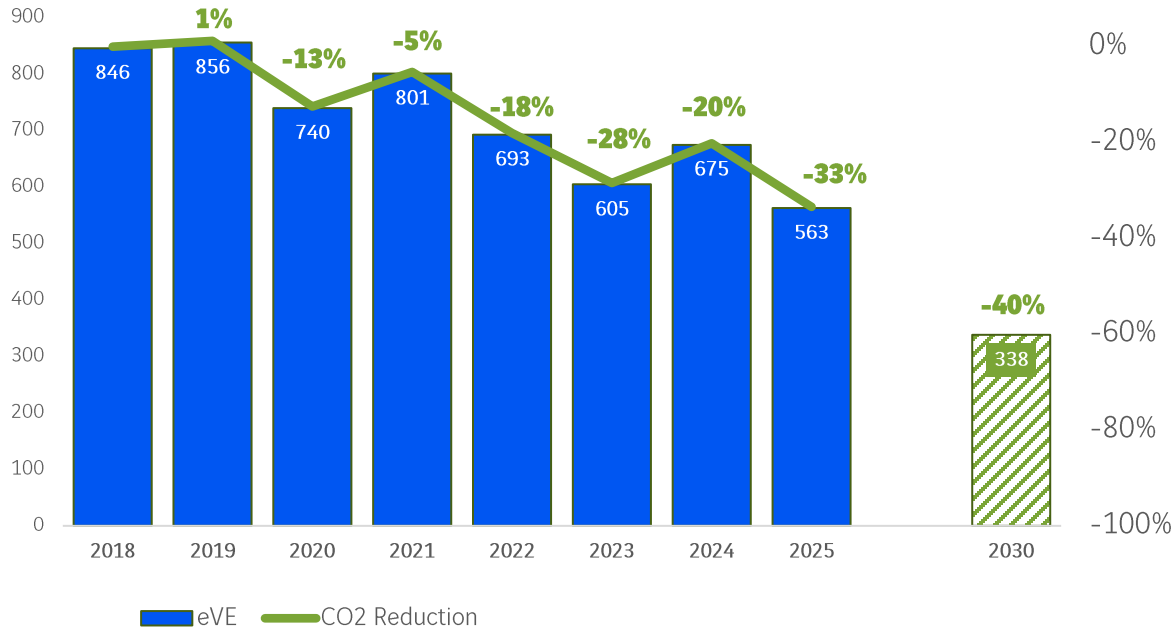


PERFORMANCE



PERFORMANCE 2025 – CEGELEC INFRA TECHNICS

ENVIRONMENTAL IMPACT



BUILDINGS



100%

of green electricity as a proportion of total electricity consumption in 2025



28%

of owned renewable equipment in total electricity consumption in 2025

FLEET



23%

Electrified fleet

SCOPE 1 & 2 IN 2025

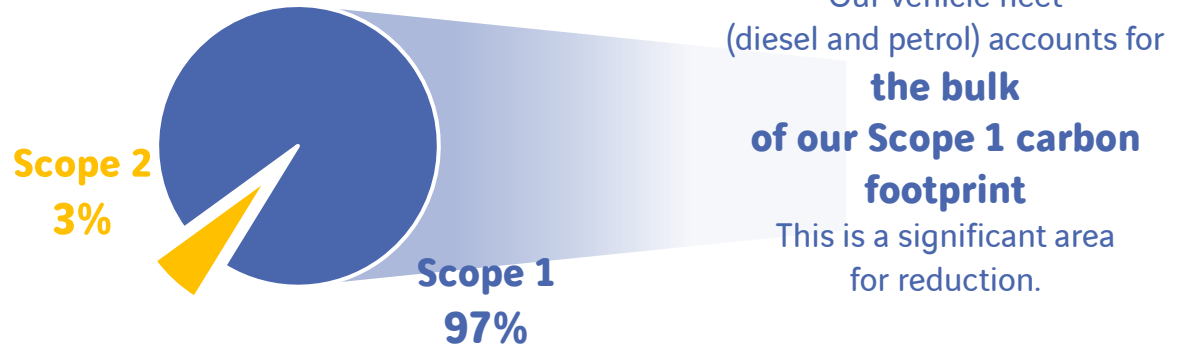
Total Scope 1 + 2 emissions



In line with the Group's objectives, Cegelec Infra Technics is committed to reducing its greenhouse gas emissions across its operations through lower-carbon alternatives.

* Tonnes of CO₂ equivalent

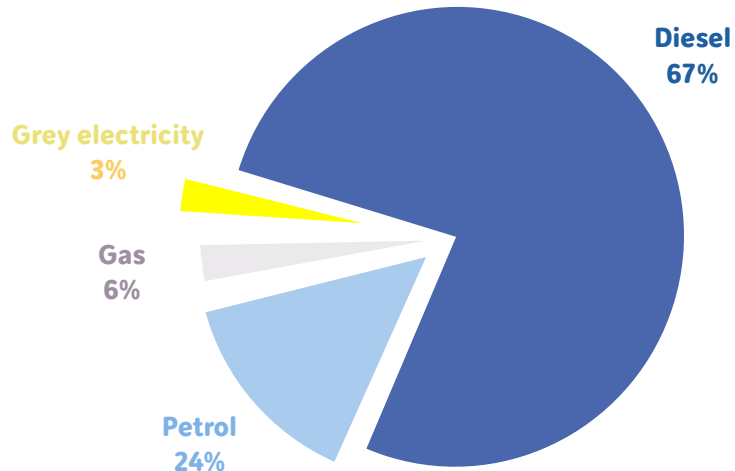
Breakdown of Scopes 1 + 2



The breakdown of our emissions is predominantly dominated by Scope 1, through our consumption of hydrocarbons. Our grey electricity consumption accounts for a smaller proportion.

OUR IMPACT

Scope 1 breakdown



OUR ACTION POINTS: RENEWING OUR VEHICLE FLEET IN A MORE ENVIRONMENTALLY FRIENDLY WAY

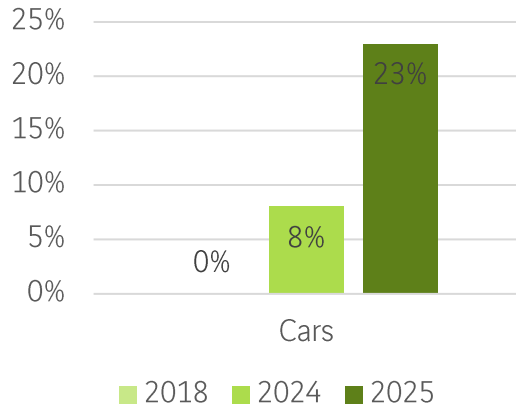
Accelerate the renewal of the fleet of light and commercial **vehicles** with **electric** or lower greenhouse gas emission models

Collaborate with manufacturers and hire companies of construction machinery to field-test **low-carbon innovations**

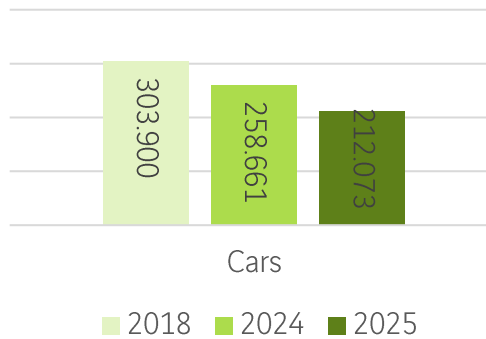
Encouraging employees to reduce their consumption through developing **car-sharing** platforms, training in **eco-driving**, and encouraging the use of **soft mobility**

SPECIFIC FLEET ANALYSIS

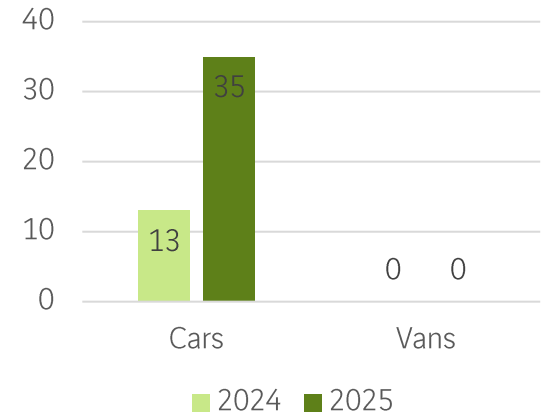
% of Electric Cars



Fuel consumption (L)

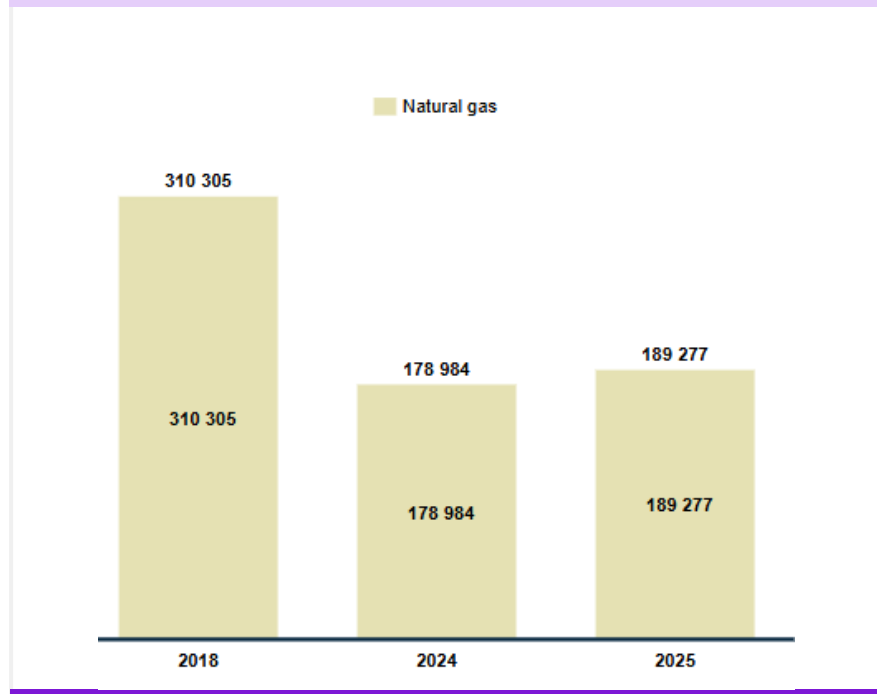


Electric Cars - Vans

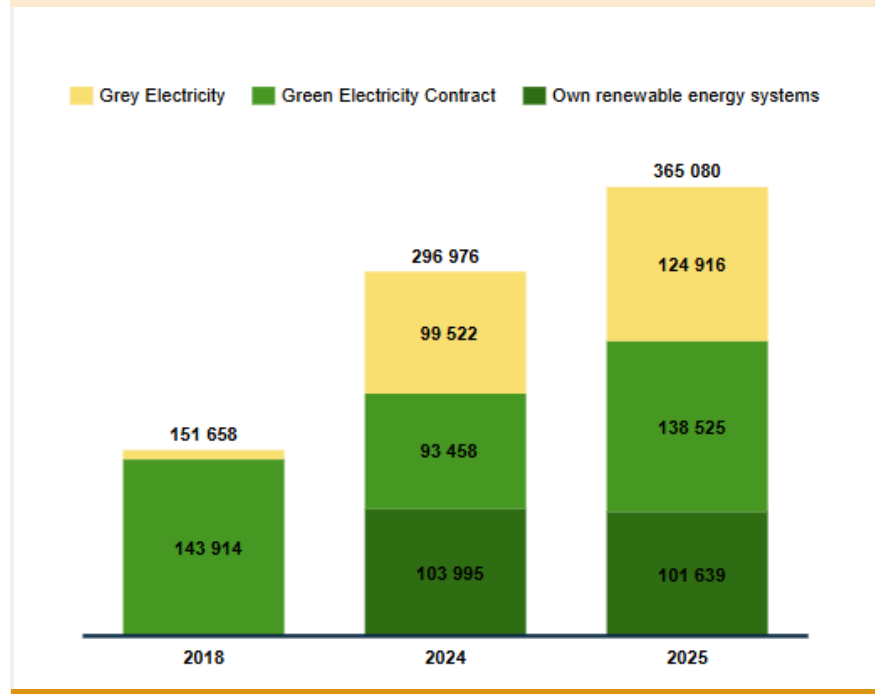


PERFORMANCE 2025

GAS CONSUMPTION (KWH)



ELECTRICITY BY SOURCE (KWH)



AWARENESS & TRAINING

ENVIRONMENT E-LEARNING COMMITMENTS

Target for 2026: All employees

260

Number of people targeted

SHARING KNOWLEDGE

- Promotion of the Sustainable Shapers Webinars
- Green ambassadors events : every year, we organise at pole a level a meeting with each green ambassadors of the groups to share knowledge & innovations. The green ambassadors are the key to stimulate their business units.

ENVIRONMENTAL EXPERTS

- More than 55 experts identified within the division, holding regular meetings to discuss tools and processes
- Monthly meetings with expert groups to share knowledge across each area and exchange innovations.

PARTICIPATION

.AGORIA





TARGETS

PROPOSING ALTERNATIVES: ENVIRONMENTAL SOLUTIONS

VINCI Energies' companies are committed to working alongside their clients to achieve decarbonisation targets through concrete actions and offerings known as "environmental solutions".

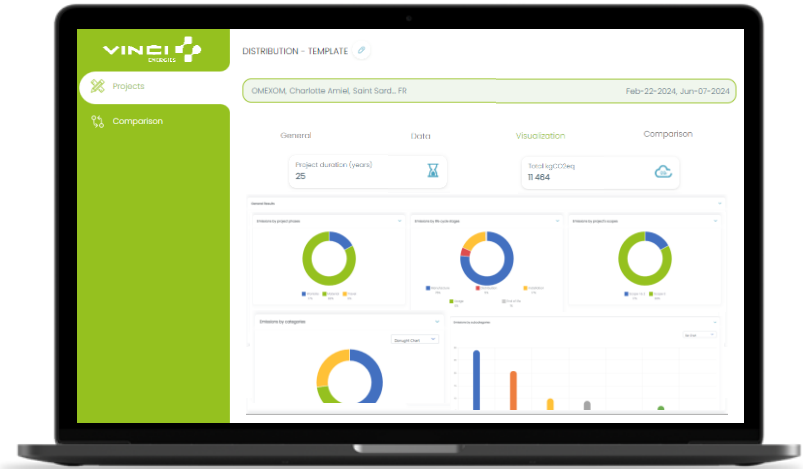
These solutions:

- 1 Provide clients with solutions that improve their environmental footprint in at least **one of the three pillars** (preserving natural environments, optimising resources, taking action on climate change)
- 2 Offer **measurable** benefits compared to a **baseline scenario**
- 3 Do not **negatively** impact any of VINCI Energies' other environmental pillars



MEASURING THE CARBON FOOTPRINT OF PROJECTS

- eco2VE, our pioneering tool supporting VINCI Energies' decarbonisation projects
- Estimation of CO2 equivalent emissions from the equipment and services we offer our clients
- Comparison and variations of projects aimed at implementing and offering reliable environmental solutions



eco₂VE⁺
My projects' footprint

INDIRECT EMISSIONS ACTIONS

SCOPE 3 METHODOLOGY PROCESS

- Review of the Scope 3 methodology to include product quantities (supplier data and internal data)
- Deployment of the Scope 3 BI Dashboard with training
- Cooperation with Procurement to incorporate environmental criteria into the procurement and supplier selection process

SCOPE 3 MATERIALS ACTIONS

- Request green alternatives for standard materials and minimise packaging waste
- Circular economy: investigate circular initiatives, use an Excel tool to track implementation
- Support the creation of Green Solutions and the development of best practices within the BU
- Consider providing two quotations: standard vs green (using ECO2VE)

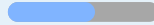
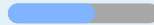
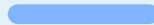
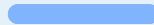
AVOIDED EMISSIONS

- Identification of the key activities that contribute to the decarbonisation of our clients and lead to avoided emissions
- Improvement of our existing tools (Scope 3 dashboard, ECO2VE) to further highlight innovative solutions within our projects and identify sources of avoided emissions compared to reference scenarios
- Create and report on an avoided emissions indicator

ACTION PLAN 2026

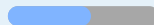
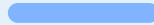
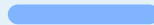
SCOPE 1, 2 & 3

- Continue fleet electrification to reduce Scope 1
- Continue green electricity contracts for our sites
- Introducing green offers (using ECO2VE)
- Calculate the impact of our production



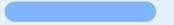
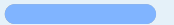
COMPLIANCE

- European **regulatory watch** – CSRD, CS3D, CBAM...
- Local environmental regulations applicable to our customers
- **Customers** with environmental targets



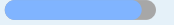
AWARENESS

- HSEQ induction for new employees
- Achieve 100% completion of VINCI Environmental e-learning courses (all employees)
- Share our environmental ambitions with clients and suppliers
- Promote the Green Ambassador Network and other initiatives within our sector



TOOLS

- Continue to improve the quality of reporting
- Promote REYUZ, our internal marketplace
- Proactively calculate the carbon footprints of projects to demonstrate the necessity to clients





'Gold' status
on our CSR approach



CO₂ PERFORMANCE LADDER

Level III



Environmental management
system



Quality management



THANK YOU