



VINCI ENERGIES COMMITS FOR
THE ENVIRONMENT

VINCI ENERGIES, ACCELERATING THE ECOLOGICAL TRANSITION

ACTING ON TWO MAJOR CHANGES:
ENERGY AND DIGITAL

INTEGRATOR

tailor-made multi-technical solutions and services, useful for people and the planet

A PARTNER ROOTED IN THE TERRITORIES,

at the heart of its customers' energy choices, their infrastructures and their processes





VINCI ENERGIES
ENVIRONMENTAL COMMITMENTS
IN A NUTSHELL

REMINDER : SCOPE 1 & 2 / SCOPE 3 UPSTREAM & DOWNSTREAM

Scope 3 upstream

= our suppliers
(manufacturing of purchased goods and services, transportation during the production phase and distribution)



Scope 1 & 2

= our business units at VINCI Energies
(buildings and vehicle units)

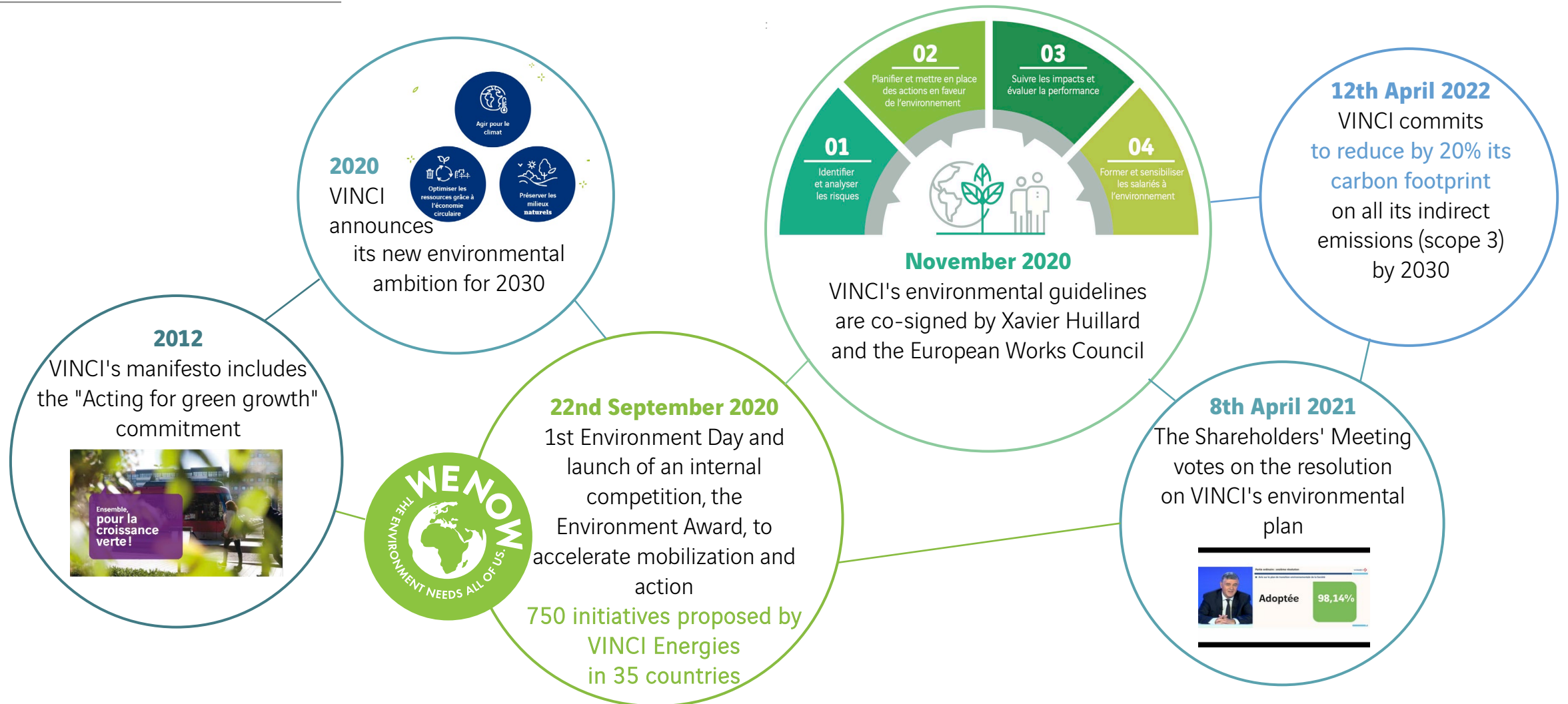


Scope 3 downstream

= our customers
(transport of goods for installation, use of products and their end-of-life treatment)



AN AMBITION AFFIRMED BY VINCI FOR SEVERAL YEARS, ACTIONS THAT ARE ACCELERATING



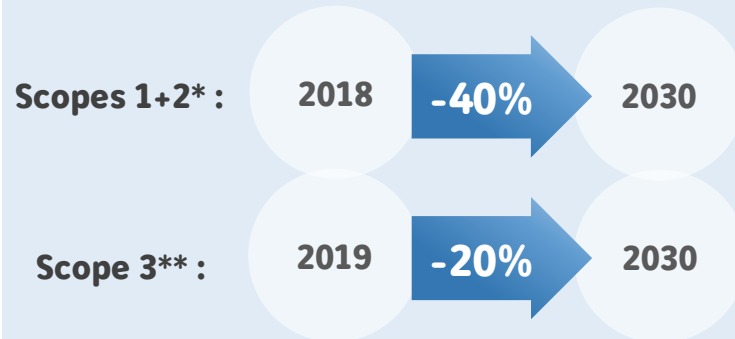
VINCI ENERGIES' COMMITMENTS

Develop solutions to enhance the living environment while managing and reducing the impact of our activities in 3 main areas.



ACT FOR CLIMATE

Reduce our greenhouse gas emissions



*direct and indirect emissions linked to our energy consumption

**Indirect emissions (suppliers and customers)



OPTIMIZING RESOURCES THROUGH THE CIRCULAR ECONOMY

Value 80% of our waste:

- Inert
- Hazardous*
- Non-hazardous



*100% of our hazardous waste are treated



PRESERVE NATURAL ENVIRONMENTS

- Reduce our water footprint
- Prevent nuisances and incidents towards Zero Net Loss of Biodiversity





**SCOPE 1 & 2 :
ACTING ON OUR DIRECT
ENVIRONMENTAL IMPACT**

STATUS :

ESTIMATION OF VINCI ENERGIES CARBON FOOTPRINT

295 000*
Tons
CO₂
equivalent

*audited figures
in 2022

Scopes 1 & 2

= our business units at VINCI Energies
(vehicle fleets and buildings)



STATUS :

VINCI ENERGIES SCOPES 1 & 2 EMISSIONS IN 2022

Amount of scopes 1 + 2

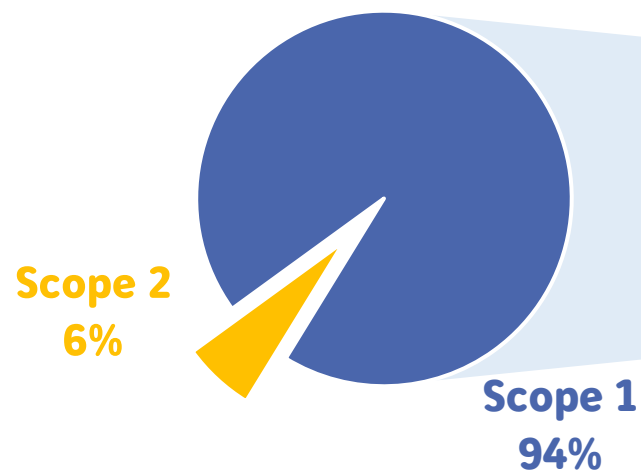


-40 % between 2018 and 2030

VINCI Energies is committed to reducing its greenhouse gas emissions within its perimeter of activity by implementing less carbon-intensive alternative solutions.

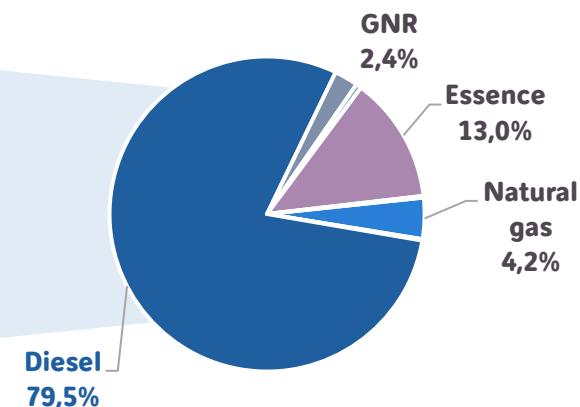
* Tons CO2 equivalent

Breakdown of scopes 1 + 2



The breakdown of our emissions is dominated by our Scope 1, through our consumption of hydrocarbons. Our electricity consumption represents a smaller share.

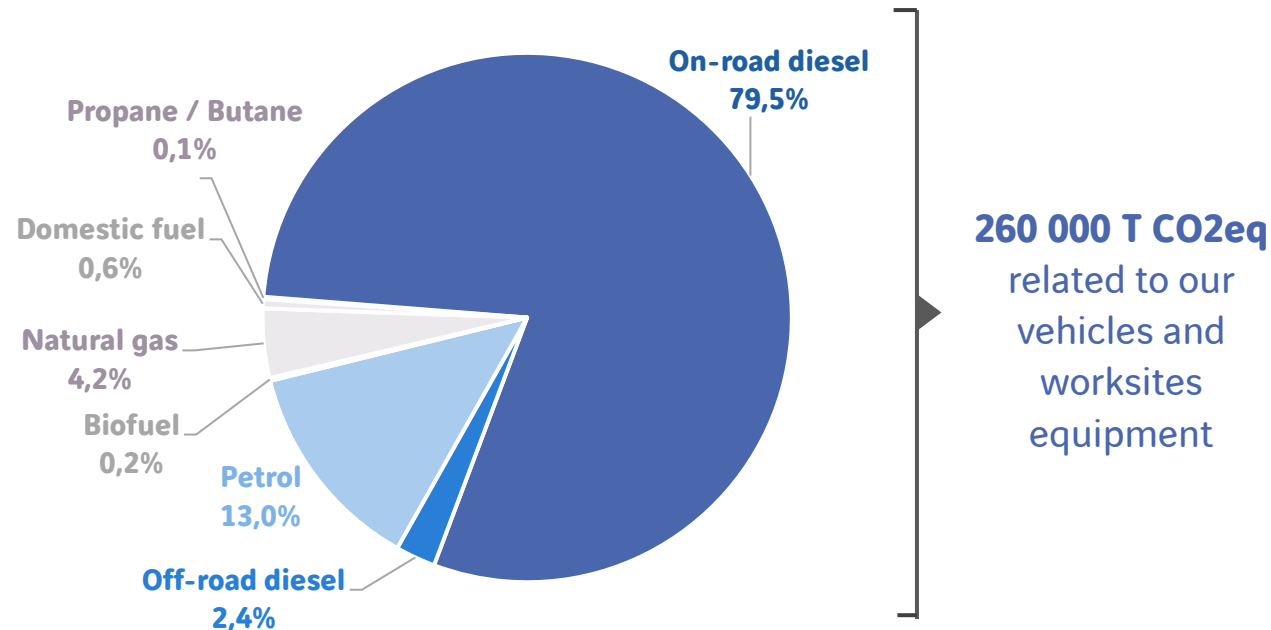
Our scope 1 in details



Our vehicle fleet (diesel and gasoline) represents the bulk of our Scope 1 carbon footprint. This is a significant area for reduction.

OUR LEVERS FOR ACTION: RENEWING OUR VEHICLE **FLEET** IN A MORE SUSTAINABLE WAY

Breakdown scope 1



Accelerate the renewal of the light and commercial vehicle fleet with **electric** or less greenhouse gas emitting vehicles

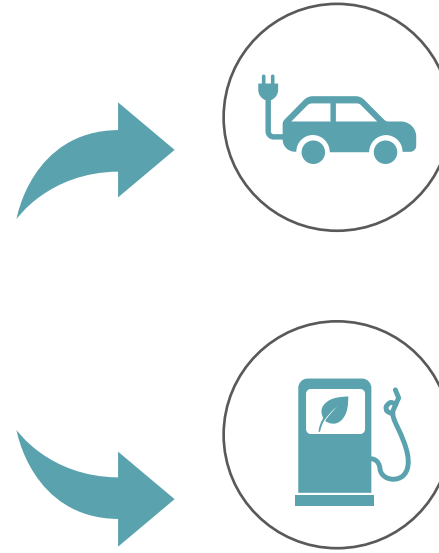
Substitute part of the construction equipment fleet with electric solutions or equipment using **biofuels**, and set up sensors to monitor consumption

Collaborate with construction equipment manufacturers and rental companies to test **low-carbon innovations** in the field

Encouraging employees to reduce their consumption by developing **carpooling** platforms, training in **eco-driving** and encouraging the use of **soft mobility**

OUR LEVERS FOR ACTION: ELECTRIFYING OUR **FLEET** AND USING BIOFUELS

Decarbonizing our vehicle fleet means accelerating our efforts to introduce new modes of travel.



+75%
of electric vehicles in 2022

Establishment of partnerships with **suppliers** for the procurement of biofuels for our heavy and light vehicles

Perimeter
BUILDINGS



Electrification
IN PROGRESS



Bike lease :
51.0000 kms
covered

OUR LEVERS FOR ACTION: OPTIMIZING CONSUMPTION OF OUR BUILDINGS

Perimeter **BUILDINGS**

INCREASE ENERGY EFFICIENCY OF OUR BUILDINGS

Carrying out energy efficiency diagnostics on our building stock and deploying appropriate initiatives, such as thermal renovation, temperature control, eco-design, etc.

Electricity, used mainly for lighting, ventilation, heating and cooling of our buildings, represents **16,550 tons of CO2 equivalent**. The natural gas consumed for heating represents **10,700 tons of CO2 equivalent**.

Internal energy audits have been launched, currently covering **42%** of our buildings, in order to classify them according to their energy performance. The aim is to identify energy-intensive buildings and reduce their share.

OPTIMIZE OUR ENERGY CONSUMPTION

Implement sensors and intelligent analysis systems for our energy consumption (electricity, water, etc.)

In 2022, our teams consumed through their activities: **623 500 m3 of water** and **120 GWh of electricity**

Intelligent, ongoing monitoring of our buildings' consumption of natural resources and energy is essential to ensure their reduction.

DEVELOP RESPONSIBLE PROCUREMENT

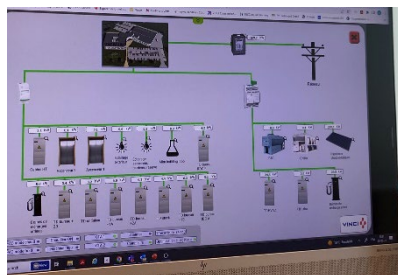
Favouring green certificates and guaranteed renewable electricity purchase contracts, increasing our self-consumption capacity from decarbonated energy.

The amount of clean electricity purchased from our suppliers in 2022 approaches **33 GWh**

This means that nearly **28%** of our supplies come from renewable production. This amount is constantly increasing.



HOOYBERGHS TURNHOUT :
New HVAC installation :
fossil free heating and cooling
Solar Panels :
Self production electricity



VEB GOSSELIES :
Energy monitoring **WAVE**

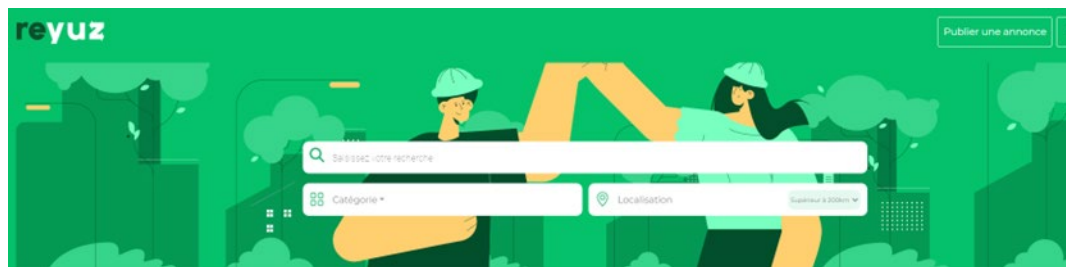
OUR LEVERS FOR ACTION:

PRESERVE THE NATURAL ENVIRONMENT & DEVELOP CIRCULAR ECONOMY

VINCI Energies' environmental commitment also covers resource management and the preservation of natural environments.

Several actions have been launched within VINCI Energies to save resources and preserve biodiversity, and to develop the use of the circular economy:

- Carrying out cartographic studies to establish more precisely our areas of improvement
- Collection and deployment of the best initiatives and solutions related to sobriety and respect for the natural environment
- Providing educational content and awareness tools on these themes
- Reassessment and strengthening of our VINCI Energies "Circular Economy" and "Natural Environment" commitments



Perimeter Buildings **pilot** of “**Reyuz**” app developed by Building Solutions promoting circular economy

Perimeter
BUILDINGS

OUR LEVERS FOR ACTION:

TRACKING OUR ENVIRONMENTAL FOOTPRINT

Measuring and monitoring the evolution of our footprint is essential to achieving our environmental objectives.

By the end of the year, all 1,900 VINCI Energies business units will have access to a data management tool, enabling each business unit to collect, view and simulate its environmental performance.

More than 100 indicators will be collected, divided into the following categories

- Energy consumption
- Transportation
- Circular economy and waste
- Management systems and certifications
- Biodiversity
- Trainings



OUR LEVERS FOR ACTION: TRACKING OUR ENVIRONMENTAL FOOTPRINT

Perimeter
BUILDINGS

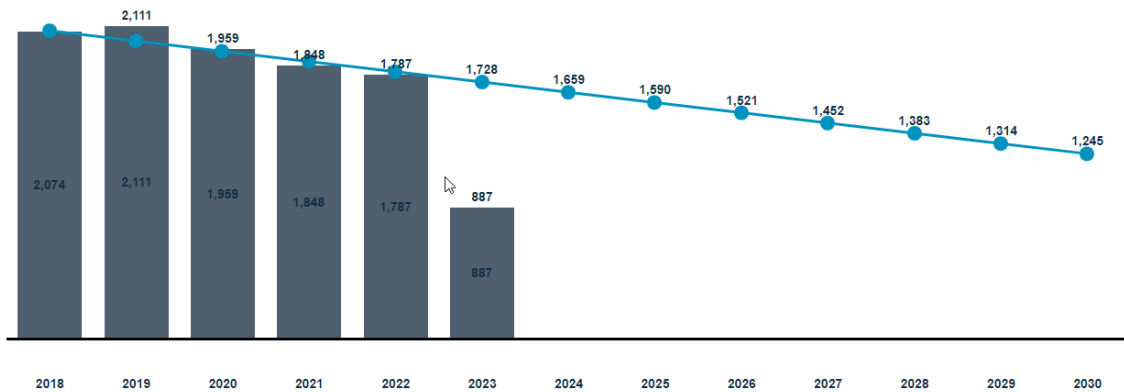
Émissions de gaz à effet de serre (Tonnes d'équivalent CO2)

Émissions & objectifs pour les scopes 1 & 2

Explorateur disponible

Croissances externes : Tous

■ Émissions totales pour les scopes 1 & 2 (tCO2) ● Objectif groupe pour les scopes 1 & 2

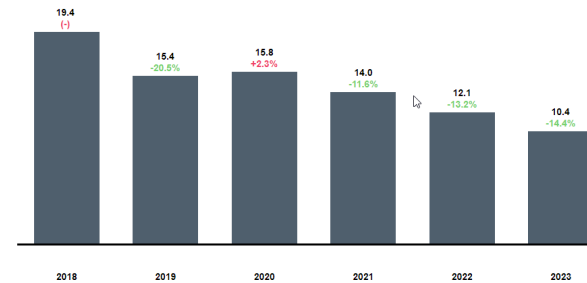


Intensités d'émission pour le scope 1 & 2

Intensité du CA (gCO2 équivalent par euro)

Explorateur disponible

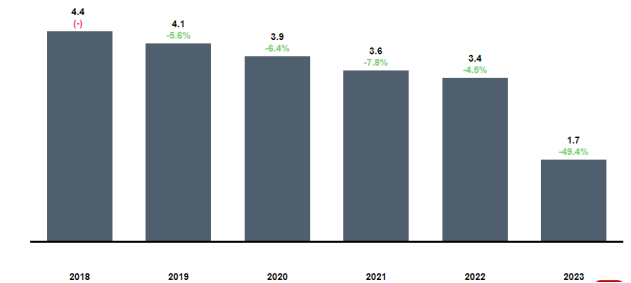
■ Intensité du chiffre d'affaires (gCO2/€)



Intensité des effectifs (tCO2 par employé)

Explorateur disponible

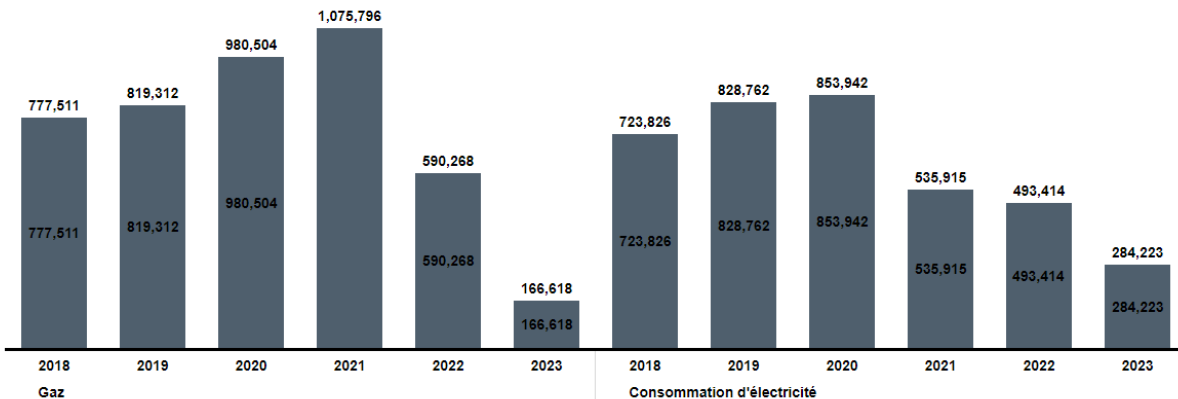
■ Intensité des effectifs (tCO2/pers)



Installations (Électricité, Gaz & Chauffage)

Consommation des installations (kWh)

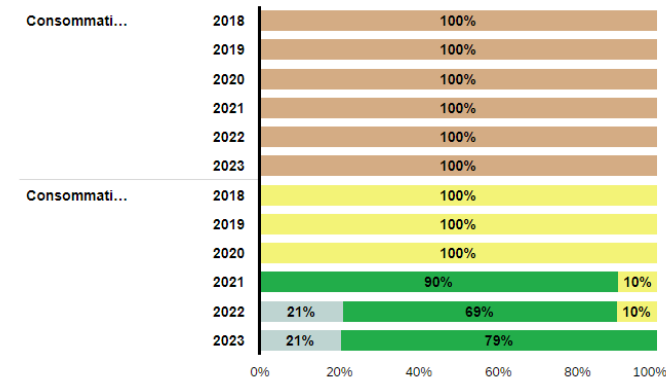
Explorateur disponible



Consommation des installations par catégorie

Explorateur disponible

■ Électricité issue d'équipements renouvelables ■ Électricité issue du contrat vert
■ Électricité hors contrats verts ■ Gaz naturel



Projets certifiés & offres vertes

in* | 1 filtre | Explorateur disponible

21

+4, +24%, à 2022

Nombre d'offres vertes

215,731,000 €

+150,710,000 €, +300%, à 2023

Chiffre d'affaires des projets (EUR)

252%

+212, +4519%, à 2023

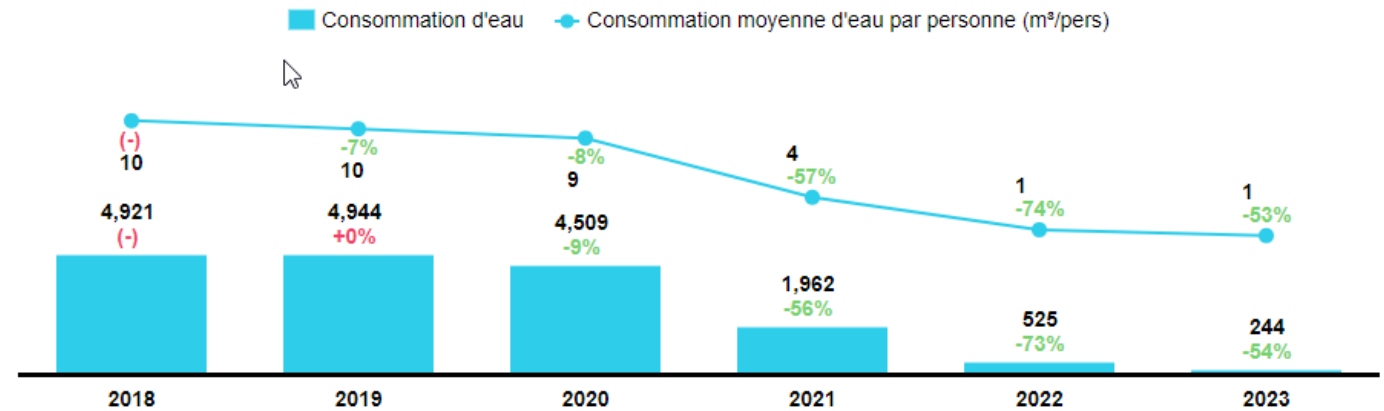
CA des offres vertes / CA total

OUR LEVERS FOR ACTION: TRACKING OUR ENVIRONMENTAL FOOTPRINT



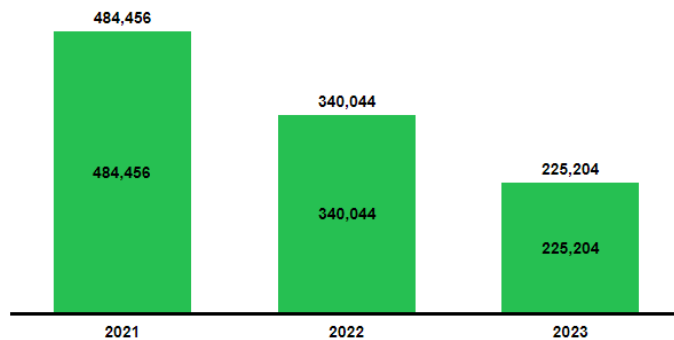
Consommation et intensité de l'eau

en * | Explorateur disponible



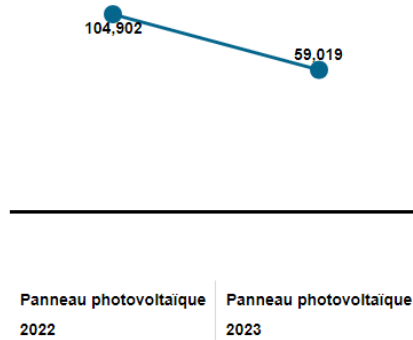
Contrat d'énergie renouvelable

Explorateur disponible



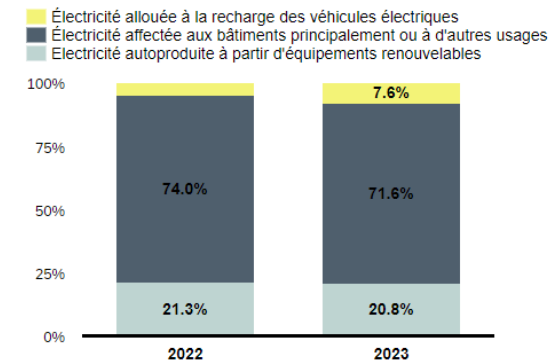
Équipements renouvelables

Explorateur disponible







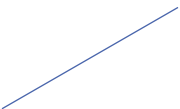

Electricité par usage

2 filtres | Explorateur disponible



STATUS :

VINCI ENERGIES BU'S CERTIFIED

			
<p>VINCI Energies obtains "Gold" status for its CSR approach</p>	<p>36% of VE business units</p>	<p>37% of VE business units</p>	<p>54% of VE business units</p>
<p>Perimeter BUILDINGS</p> <p>Certification ongoing Should be ready Q4 2023</p>		<p>Ongoing Should be ready Q2 2024</p>	



SCOPE 3
ACTING ON OUR INDIRECT
ENVIRONMENTAL IMPACT:
OUR SPHERE OF INFLUENCE

STATUS :

ESTIMATION OF OUR INDIRECT CARBON FOOTPRINT: SCOPE 3 UPSTREAM (SUPPLIERS)

Around
3 400 000
tons CO₂
equivalent

VS

295 000*
T CO₂eq

* Audited figures
in 2022

Scope 3 upstream

Scope 1 & 2

= our suppliers

(manufacturing of purchased goods and services, transportation during the production phase and distribution)

= our business units at VINCI Energies

(buildings and vehicle fleets)



OUR LEVERS FOR ACTION:

ENCOURAGE RESPONSIBLE PURCHASING WITH OUR SUPPLIERS

Awareness and training of VINCI Energies purchasing teams, respect for the **fundamental principles** of the VINCI group

Coordination of actions with our suppliers and subcontractors via framework contracts and/or a Responsible Procurement charter



Measuring the the carbon footprint of products and services to **monitor the evolution of our CO2 emissions**

Sharing best practices and aligning environmental commitments with major partners

Collaboration with suppliers to stimulate alternative product offers (eco-design, transport reduction, use of recycled material...)

STATUS:

ESTIMATION OF OUR INDIRECT CARBON FOOTPRINT: SCOPE 3 DOWNSTREAM (CUSTOMERS)

Around
3 400 000
T CO₂eq

295 000*
T CO₂eq

VS

Around
4 300 000
T CO₂eq

* Audited figures
in 2022

Scope 3 upstream

Scope 1 & 2

Scope 3 downstream

= our suppliers

(manufacturing of purchased goods and services, transportation during the production phase and distribution)

= our business units at VINCI Energies

(buildings and vehicle units)

= our customers

(transport of goods for installation, use of products and their end-of-life treatment)

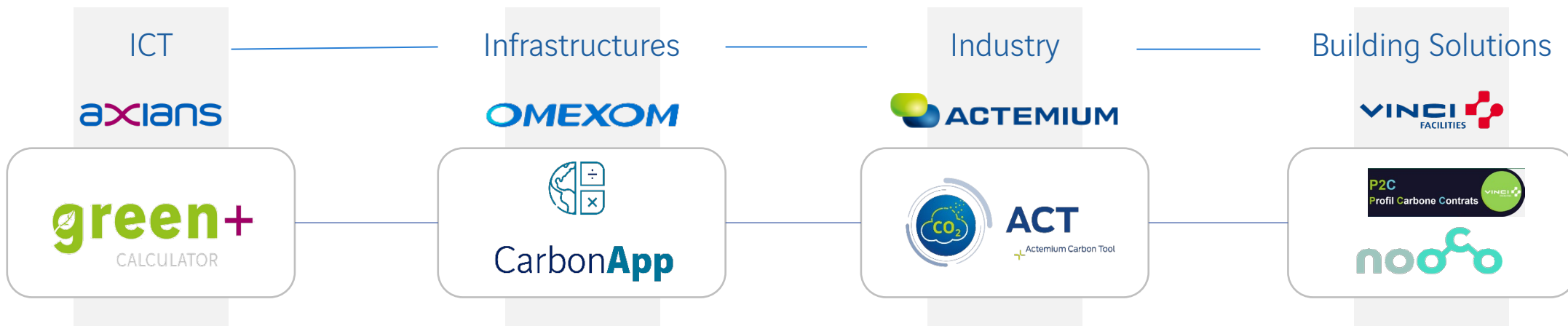


LEVERS FOR ACTION: CALCULATE OUR INDIRECT EMISSIONS WITH OUR CUSTOMERS

55 % of our indirect emissions (scope 3) come from downstream, through **the products and services** we offer to **our customers**.



In order to offer our clients solutions that emit the least amount of CO₂, we have developed "carbon tools" for each of our areas of activity to determine the footprint of our projects:



LEVERS FOR ACTION:

PROPOSE VARIANTS: THE GREEN OFFERS

VINCI Energies business units are committed to working alongside their customers to achieve their decarbonization objectives with concrete actions and offers, known as "green" offers.

These offers :

- 1 Provide customers with solutions that improve their environmental footprint, in at least **one of our three pillars** (Preserve natural environments, optimize resources, fight against climate change)
- 2 Have **quantifiable and measurable** benefits compared to a **baseline scenario**
- 3 Do not **negatively** affect another of VINCI Energies' environmental pillars



LEVERS FOR ACTION:

OUR GREEN OFFERS : SOME THEMES...



INFRASTRUCTURES

Decarbonized mobility
Micro grids
Renewable energies
Hydrogen
Energy Performance
Contract
Self-consumption



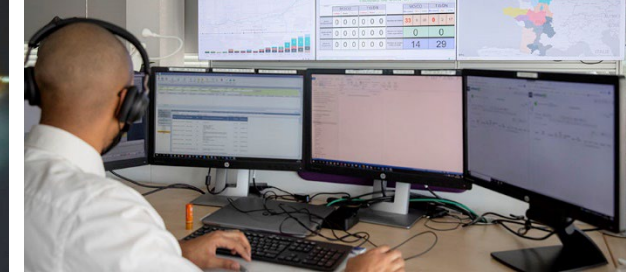
INDUSTRY

Industrial eco-efficiency
Decarbonization/CO2
capture
Extending the life of
equipment
Hydrogen



BUILDING SOLUTIONS

Performance Contract
Low carbon HVAC solution
Carbon footprint
Eco-design



ICT

"Green IT (reduced travel &
digital minimalism)
Optimization of customer
production resources

VAC MECHELEN



Intelligent Control System for lightning

Temperature & CO₂ monitoring

CLINIC ST JEAN BRUSSELS



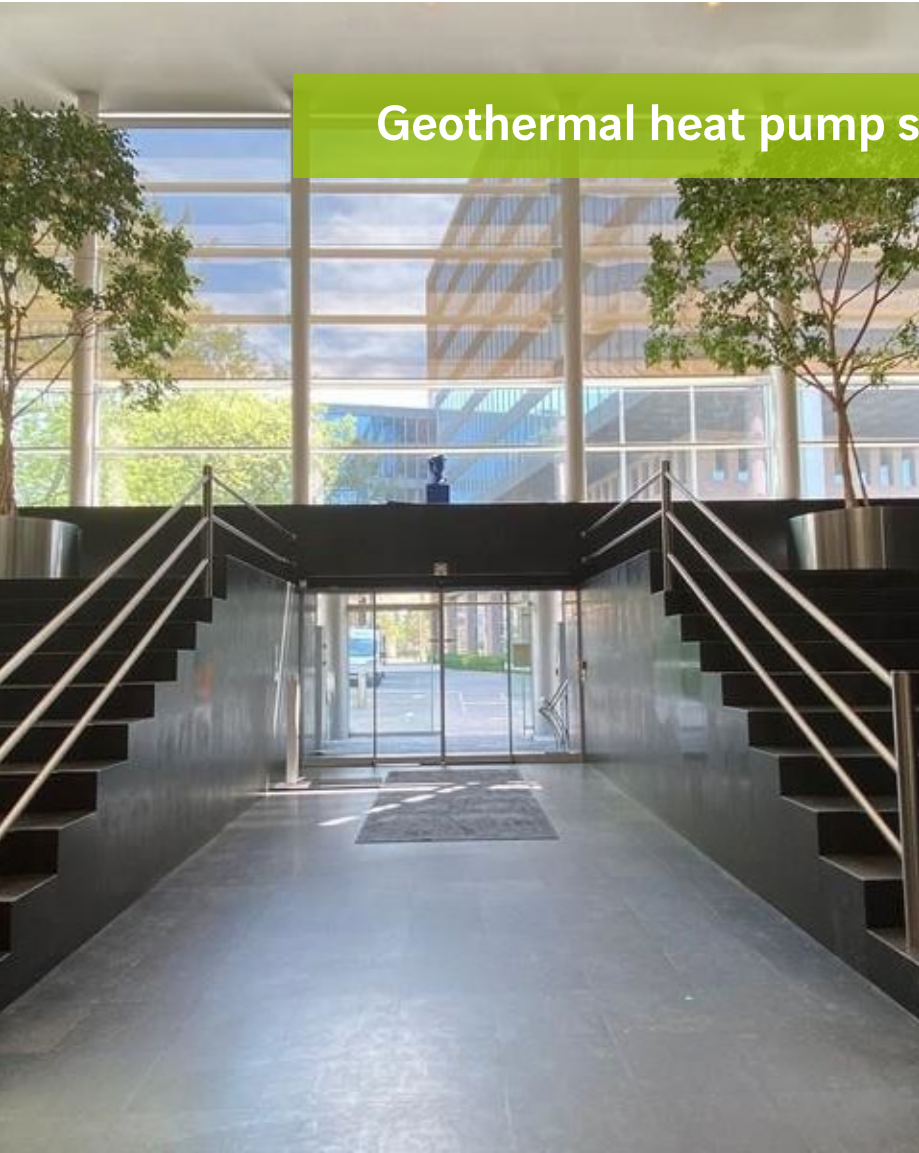
Replacement Heating System

Perimeter
BUILDINGS

CREPAIN

GENT

Geothermal heat pump system



Perimeter
BUILDINGS



SOWAER

NAMUR



Level 3 CO₂ performance
certification



NOBEL I UZ GENT



Energy via Heat Pump

Perimeter BUILDINGS

BRUCITY BRUSSELS



Energy monitoring

GOODBYE
TO STANDBY

axians



AV Power Save

Perimeter
BUILDINGS

LAGO
BREDENE



Fossil free / Geothermy



Fossil free offices

COMMERCE 46

BRUSSELS

More projects to come...

Perimeter
BUILDINGS

Thank you for your
attention
Find us online

Our website

www.vinci-energies.com

Our online media

THE **AGILITY** EFFECT
www.theagilityeffect.com

Our social networks

